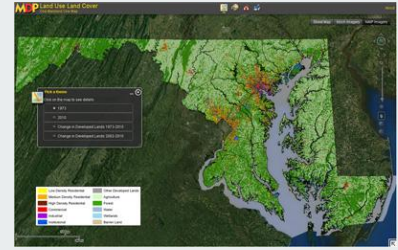


Instructions:

Take out Chromebook.

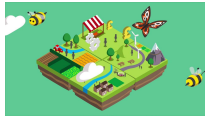
Land Use in Maryland

Unit 1 - Living Together
Learning Set 1:
1.6



Land Use:

Definition: The way people use the Earth's surface.



Types:

- Residential
- Commercial
- Industrial
- Agricultural

Residential Land Use:

Land used for housing human beings.



Commercial Land Use:

Land that is used to make money and interact with the public.



Industrial Land Use:

Land used by businesses or government to manufacture or distribute goods.



Agricultural Land Use:

Land that is used to produce food.



Living Together Textbook:

Turn to page 42 to read about the effects of land use on a river.

Go to Announcement on Science Canvas Page:

Click on Maryland Land Use Map Link in Announcements and click on the link to open.

<http://mdpgis.mdp.state.md.us/landuse/imap/index.html>

Listen for instructions.

Maryland Land Use Color Key

Green=Forests

Brown=High Density Residential

Yellow=Medium Density Residential

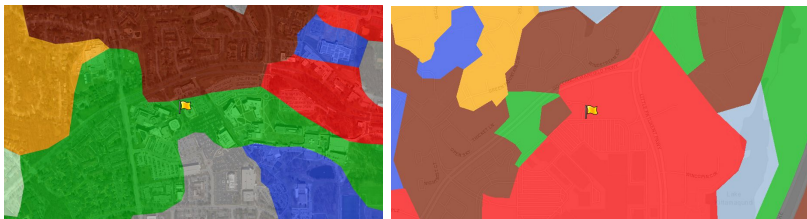
Red=Commercial

Light Blue = Water

Dark Blue = Institutional

Gray=Undeveloped

The Mall in Columbia (1973 vs 2010)



Green=forests / Brown=High Density residential / Yellow=Med Density Residential / Red=Commercial
Light Blue = Water / Dark Blue = Institutional Gray=Undeveloped

Patapsco Middle School (1973 vs 2010)





Link to MD Land Scavenger Hunt Questions

<https://drive.google.com/file/d/1ltb-G2eFtz5re3ghspXDLJTgXr4AI91A/view?usp=sharing>